

---

## Regency Place Birmingham

---



---

### Project Description

---

This project is a redevelopment of a city centre site which was previously a street level car park.

The development features 82 quality apartments over 7 floors. Regency Place development had piled foundations with a contiguous piled retaining wall around the perimeter foundations. An existing masonry building adjacent to the development had to be retained and underpinned to form the low level basement car park.

---

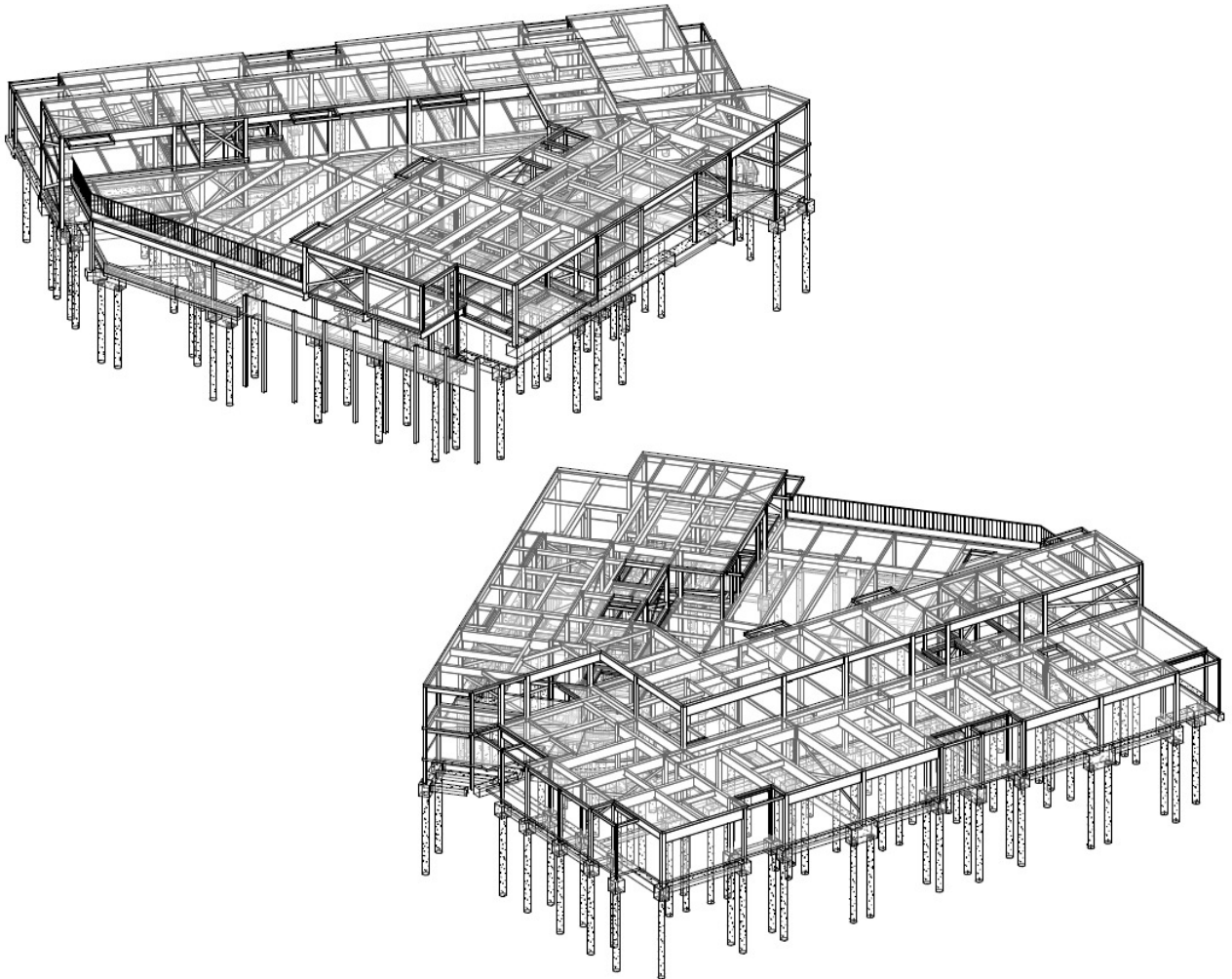
<b>Client</b>	Oakmoor Deeley
<b>Contractor</b>	Phase 1 Carillion Phase 2 Deeley Construction
<b>Architect</b>	SR Davis
<b>Value</b>	£110 million (Phase 1 and Phase 2 £35 million)

---

---

**Regency Place  
Birmingham**

---



3 Dimensional Views of Foundations and Ground / First Floor Transfer Structure