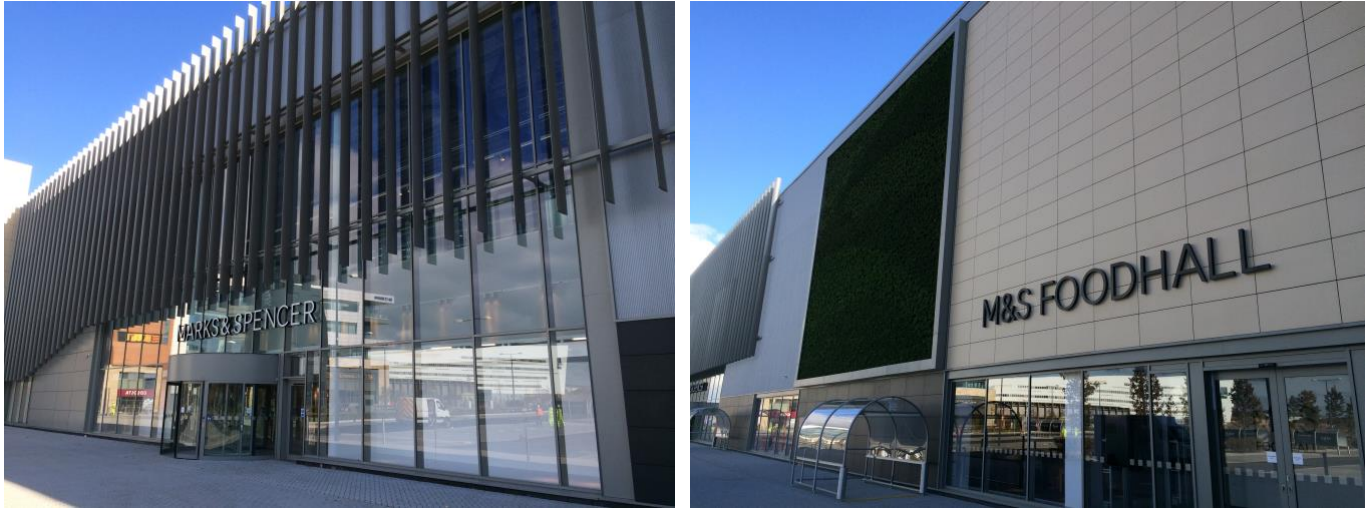

M&S Longbridge

Birmingham



Project Description

This development was part of the St Modwen's Longbridge Town Centre redevelopment Phase 2.

The former site was the MG Rover car production works and had a number of challenges including sloping ground, contamination and gas.

At 150,000 sq ft the store it is one of the largest new Marks and Spencer stores in Europe. Nolan Associates working together with the lead contractor Morgan Sindall handed over the building in December 2015.

The work is part of the wider £1 billion regeneration of Longbridge which includes new houses, offices and community facilities.

Client	St Modwen Development
Contractor	Morgan Sindall
Architect	Holder Mathias
Value	£5.5 million
